



INSTALLATION INSTRUCTIONS

'65-79 FORD F-100

INDEPENDENT FRONT SUSPENSION

SWAY BAR

Please read these instructions *completely*
before starting your installation.

Assemble suspension on vehicle before powder-coating to ensure proper fitment, and to make modifications if necessary.

For questions on installations please call 800-841-8188 In Illinois (847) 487-0150



PARTS LIST

- | | |
|-------------------------|--------------------------|
| 1) 1" OD Front Sway Bar | 2) 1" Sway Bar Bushings |
| 2) Inner Sway Bar Mount | 2) Outer Sway Bar Washer |

HARDWARE LIST

- | | |
|---------------------------------|-----------------------------|
| 8) 7/16-20 x 1 ¼" Grade 8 Bolts | 8) 7/16-20 Nylock Nuts |
| 16) 7/16 Washers | 4) ½-20 x ½" Hex Head Bolts |
| 2) ½-20 Jam Nuts | 2) 1" Sway bar Collars |
| 2) ½-20 Rod End Male | 2) ½-20 Rod End Female |
| 2) ½-20 Nylock Nut | |

For questions on installations please call 800-841-8188 In Illinois (847) 487-0150



- 1) Prior to the front cross member being installed, the frame was notched and holes were drilled in the frame for rack and pinion clearance along with sway bar mounting holes. The front cross member should be completely installed before mounting the sway bar. The 1" front sway bar has to be loaded with bushings, collars and inner plates prior to installation. **See Figure 1.**

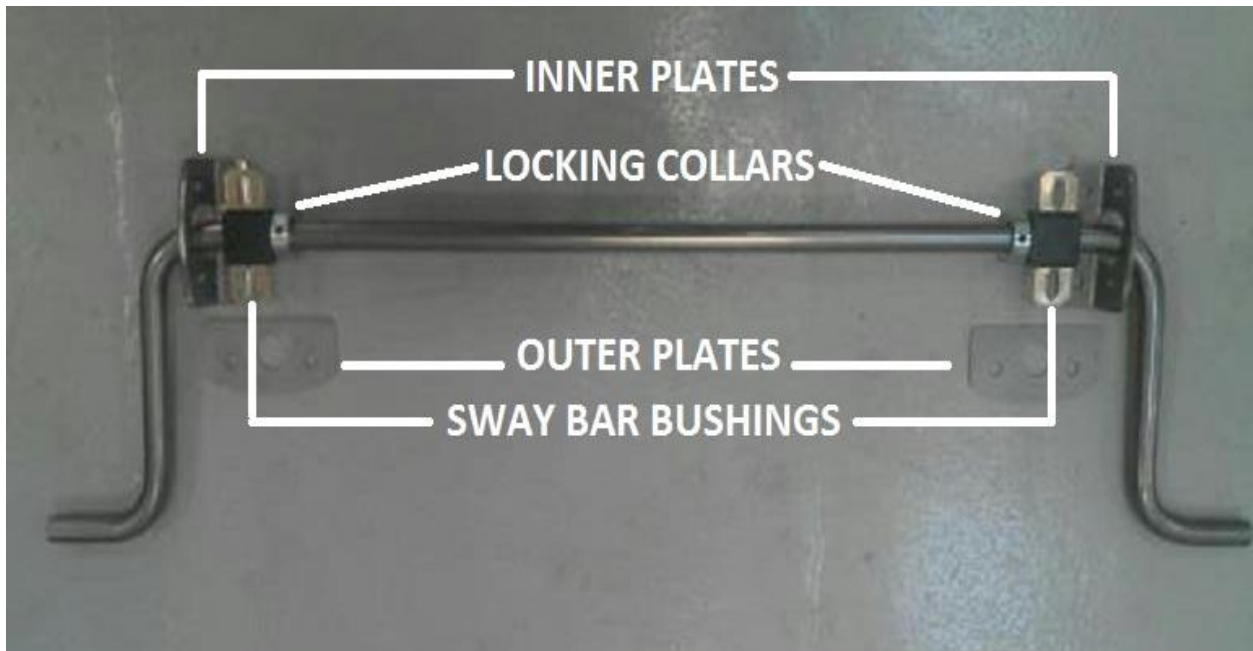


Figure 1

- 2) Use the inner plate to locate the 7/16 hole that needs to be drilled on the bottom of the frame. Center the forward hole with a oversized existing factory hole. Clamp the plate until it sits tight on the frame and center punch the hole 7/16. Remove the plate and drill a 7/16 hole on the bottom of the frame. Repeat for the passenger side. **See Figures 2-5.**

For questions on installations please call 800-841-8188 In Illinois (847) 487-0150



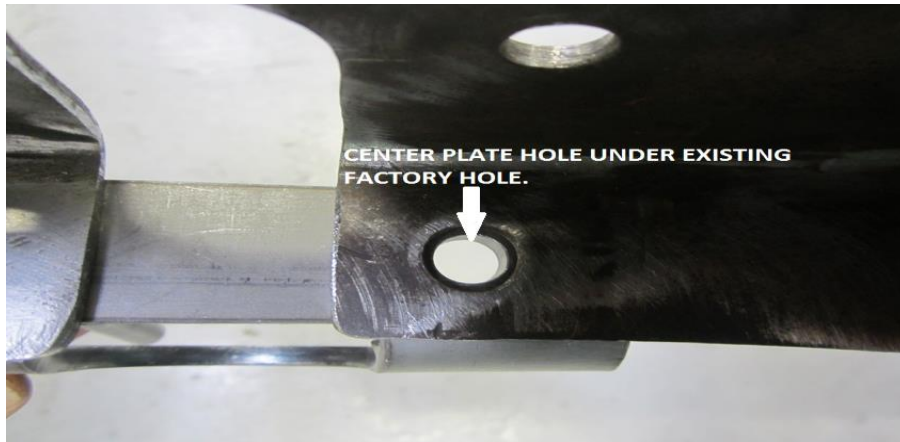


Figure 2



Figure 3



Figure 4

For questions on installations please call 800-841-8188 In Illinois (847) 487-0150



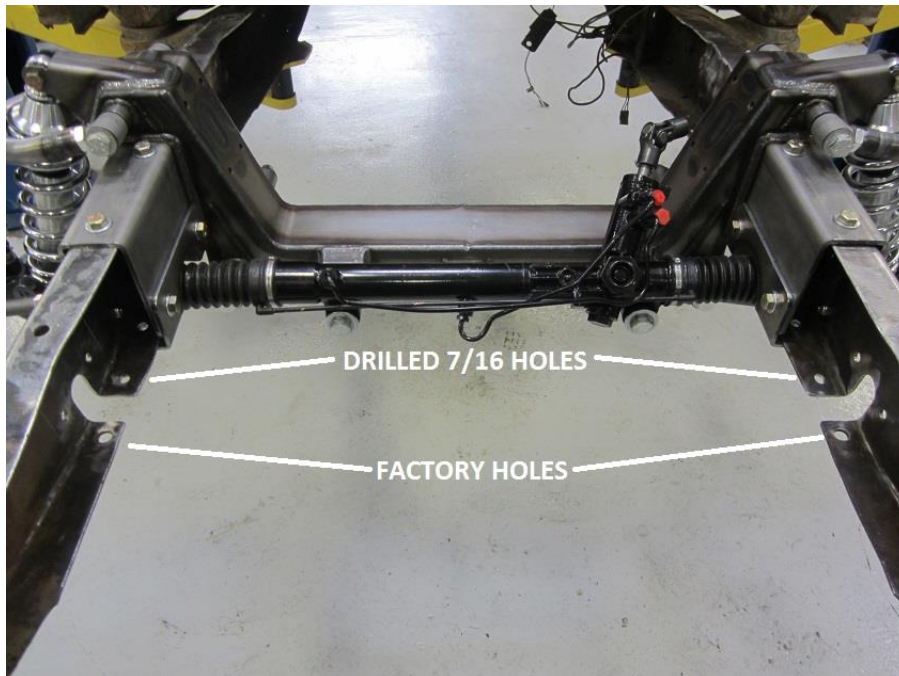


Figure 5

- 3) After the two holes are drilled it's time to install the sway bar. Install the sway bar from the underneath the frame with the collars, bushings and inner plates loaded. Use eight 7/16-20 x 1 ¼" grade 8 bolts, sixteen 7/16 washers and eight 7/16-20 nylock nuts from the hardware kit. Bolt the outer plates through the frame to the inner plates using the 7/16-20 grade 8 bolts. **See Figures 6-8.**

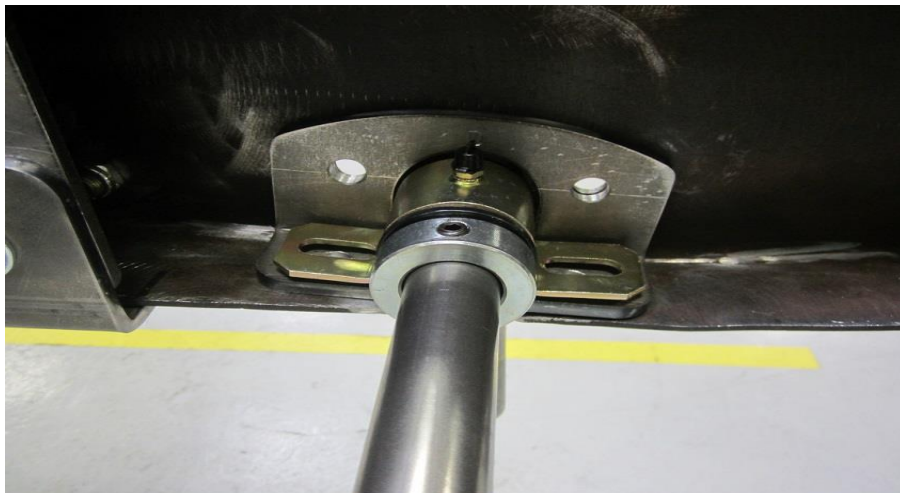


Figure 6

For questions on installations please call 800-841-8188 In Illinois (847) 487-0150



Figure 7



Figure 8

- 4) Leave bolts finger tight for ease of centering the sway bar. Assemble the $\frac{1}{2}$ -20 male and female rod ends. **USE ANTI SEIZE ON THREADS!** Assemble with $\frac{1}{2}$ -20 jam nut supplied in the hardware kit. Place female end on the lower control arm mount. Use $\frac{1}{2}$ -20 x 1 $\frac{1}{2}$ " bolts to bolt the rod end to the control arm mount. Repeat for passenger side.
See Figure 9.

For questions on installations please call 800-841-8188 In Illinois (847) 487-0150





Figure 9

- 5) Using a $\frac{1}{2}$ -20 x 1 $\frac{1}{2}$ " bolt from the hardware kit, bolt the sway bar to the male rod end. Tighten both driver and passenger sides. Assemble the tie rod ends back into the steering arm of the spindles. **See Figure 10.**

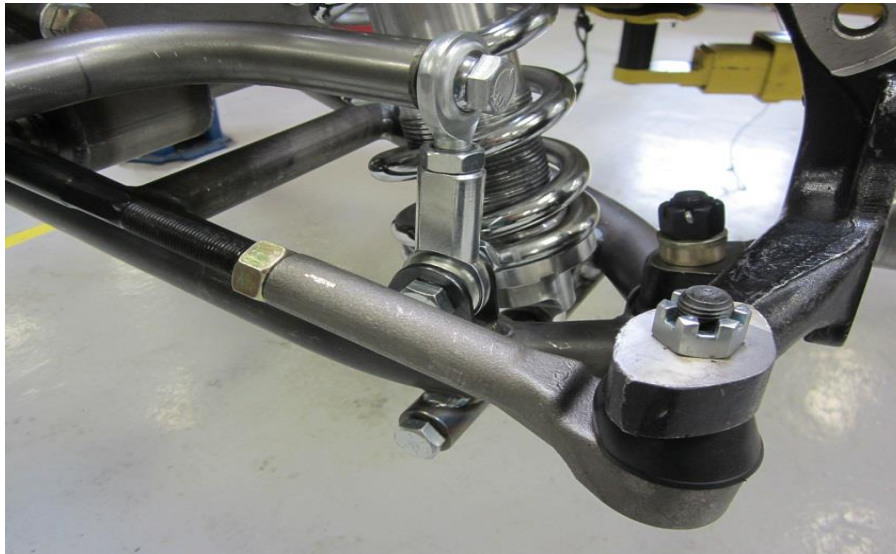


Figure 10

For questions on installations please call 800-841-8188 In Illinois (847) 487-0150



- 6) Center the sway bar by squaring the rod ends straight up and down on both sides of the vehicle. Example in figure 10. Once both rod ends are straight up and down tighten all 7/16-20 bolts. Check one more time to make sure sway bar is square. Tighten the rod end jam nuts and sway bar collars. **See Figures 11-12.**



Figure 11



Figure 12

For questions on installations please call 800-841-8188 In Illinois (847) 487-0150



- 7) After tightening down the sway bar mount brackets, collars, rod end, and rod end nut, you must set the proper position for the sway bar rod ends. To do so, set the car down on all four wheels on level ground and have it sitting at your desired ride height. (With **only one** rod end installed). Install a rod end on the opposite side, though ***only*** bolt it to the control arm. Adjust its height until you can screw the last bolt into the sway bar without experiencing any drag from the rod end. Make sure at this point it screws in **very easily**. After tightening down the last bolt, tighten down the nut on the rod end. See Figure 13.



Rod End Not Fully Aligned

Figure 13 A



Rod End Fully Aligned

Figure 13 B

- 8) Go over everything one last time to ensure that all bolts are properly torqued. Now you are ready to go out and enjoy your newly stabilized suspension!

For questions on installations please call 800-841-8188 In Illinois (847) 487-0150

