

Installation Instructions

TUBULAR MUSTANG LOWER CONTROL ARMS

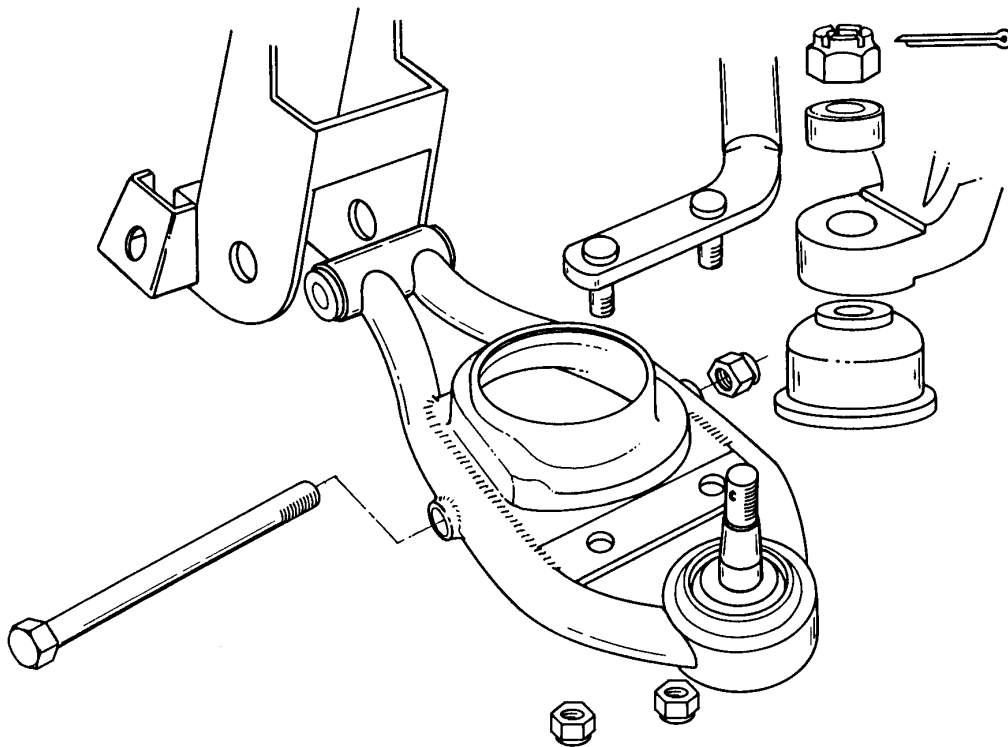
POLISHED STAINLESS STEEL

*Please read these instructions completely
BEFORE starting your installation!*

Your HEIDTS Hot Rod Shop Tubular Mustang Lower Control Arms contain the following items:

- 2) Lower Control Arms with Ball Joints & Bushings installed
- 2) Ball Joint Boots
- 2) Stainless Ball Joint Nuts
- 2) Stainless Ball Joint Nut Spacers
- 2) Stainless Lower Shock Bolts & Nuts

Begin installation by inserting the Lower Control Arms into the crossmember and secure with your lower arm bolts. Raise the Control Arms to a horizontal position and tighten bolts securely. Attach the strut rods to the Control Arms as usual. Pull the Control Arms down and install the coil springs. Place a floor jack under the Ball Joints and raise the Control Arms enough to install the shocks, using the Lower Shock Bolts and Nuts supplied. Complete the assembly by installing the spindles, using the Ball Joint Nut Spacers under the Nuts AS SHOWN, NOT on the Boots! Install Cotter Pins. If, after driving, the car settles to a point where the Lower Control Arms are no longer level, loosen the nuts on the Inner Bushing bolts, bounce the suspension to release the stress in the Inner Bushings, and tighten the nuts with the Lower Control Arms in their new angled position. Failure to do this step may result in premature failure of the Bushings. BE CERTAIN TO USE ANTI-SEIZE COMPOUND ON ALL HARDWARE!



HEIDTS
HOT ROD & MUSCLE CAR PARTS