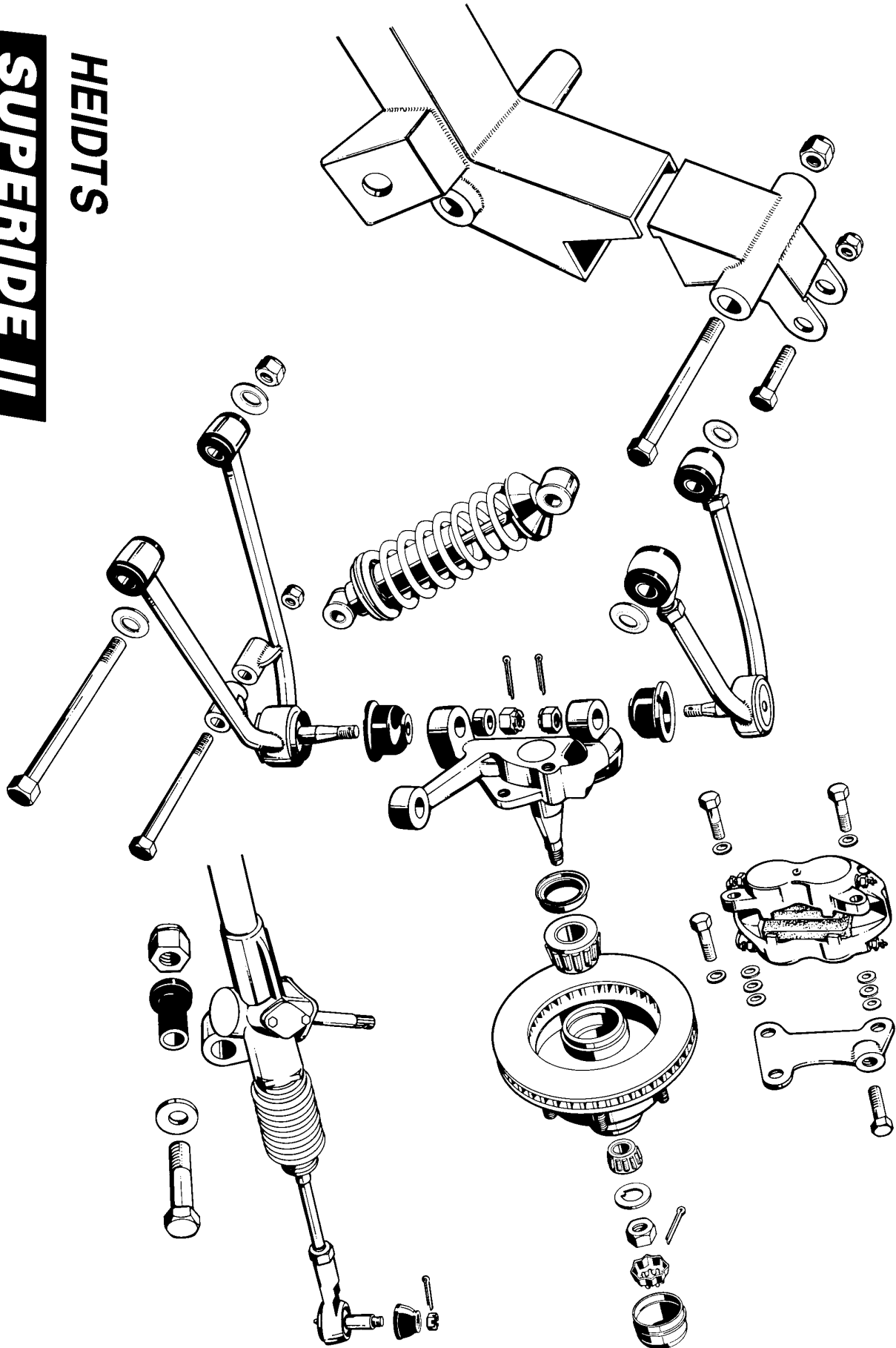


SUPERIDE II

HEIDTS



SUPERIDE II PARTS LIST

- 1 Superide II Crossmember with Upper Arm Mounts
- 1pr Upper Control Arms with Ball Joints and Adjusters
- 1pr Lower Control Arms with Ball Joints and Bushings
- 1pr Dropped Spindles
- 1pr Disc Brake Rotors
- 1 Bearing & Seal Set
- 2 Castle Nut & Dust Cap Set
- 1pr Polished Brake Calipers with Mounting Brackets
- 1pr Coil-Over Shocks with Chrome Springs
- 1 Rack & Pinion Unit with Tie Rod Ends and Mounts
- 2 Superide II Hardware Pkg.

SUPERIDE II HARDWARE PKG.

Upper Control Arms:

- 2) 5/8 -11 x 8 -1/2 Hex Head bolts
- 2) 5/8 -11 Nylock Nuts
- 4) 5/8 Cupped Washers

Lower Control Arms:

- 2) 5/8 -11 x 10 -1/2 Hex Head Bolts
- 2) 5/8 -11 Nylock Nuts
- 4) 5/8 Cupped Washers

Coil-Over Shocks:

- 2) 1/2 -13 x 2 -1/2 Hex Head Bolts
- 2) 1/2 -13 x 7 Hex Head Bolts
- 4) 1/2 -13 Nylock Nuts

Rack & Pinion Steering Assembly:

- 2) 5/8 -11 x 3 -1/2 Hex Head Bolts
- 2) 5/8 -11 Nylock Nuts
- 2) 5/8 Washers

Brake Calipers:

Use Caliper Hardware Kit Supplied

Ball Joints:

- 4) 9/16 -18 Castle Nuts
- 4) 1/8 x 1 -1/4 Cotter Pins

Spindles:

- 2) 13/16 - 20 Spindle Nuts
- 2) Spindle Washers
- 2) Nut Retainers
- 2) 5/32 x 1-1/2 Cotter Pins

Tie Rod Ends:

- 2) 9/16 -18 Hex Nuts
- 2) 3/32 x 1 Cotter Pins
- 2) 1/2-20 Castle Nut

NOTE: Some type of anti-seize compound should be used on the threads of **ALL** the stainless hardware if stainless hardware is supplied.